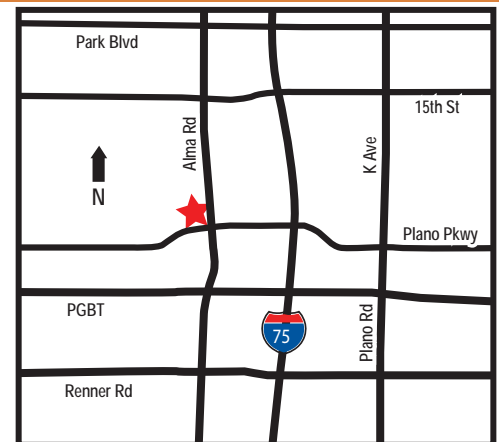


FOR LEASE
1100 WEST PLANO PARKWAY
OFFICE/MEDICAL BUILDING
 APPROXIMATELY 1,764 SQUARE FEET



1100 WEST PLANO PARKWAY, PLANO, TEXAS 75075

- BRAND NEW PROFESSIONAL OFFICE/MEDICAL BUILDING
- GREAT LOCATION ON THE NORTHWEST CORNER OF PLANO PARKWAY AND ALMA ROAD
- APPROXIMATELY 1,764 SQUARE FEET OF SHELL SPACE AVAILABLE FOR LEASE
- EXCELLENT ACCESS TO NORTH DALLAS TOLLWAY, GEORGE BUSH (190), AND SAM RAYBURN TOLLWAY (121)
- APPROXIMATELY 2 MILES FROM CITYLINE - A \$1.5 BILLION DOLLAR MIXED USE DEVELOPMENT
- DIRECTLY ACROSS THE STREET FROM HERITAGE CREEKSIDE, A \$500 MILLION DOLLAR MIXED USE DEVELOPMENT BY ROSEWOOD PROPERTY COMPANY
- SEVERAL AMENITIES IN CLOSE PROXIMITY
- TRAFFIC COUNT - 33,691 CPD - PLANO PARKWAY
 21,356 CPD - ALMA ROAD
 PROVIDED BY KALIBRATE TECHNOLOGIES 2016



2015 DEMOGRAPHICS

	1 MILE RADIUS	3 MILE RADIUS	5 MILE RADIUS
TOTAL POPULATION:	7,912	90,988	277,497
TOTAL NUMBER OF HOUSEHOLDS:	3,091	35,224	109,757
AVERAGE HOUSEHOLD INCOME:	\$91,0116	\$88,302	\$96,858

*SOURCE ESRI FORECAST FOR 2016

FOR INFORMATION CONTACT:

BRAD LIPTON
 (972) 889-4404

MARK ASTON
 (972) 889-4400

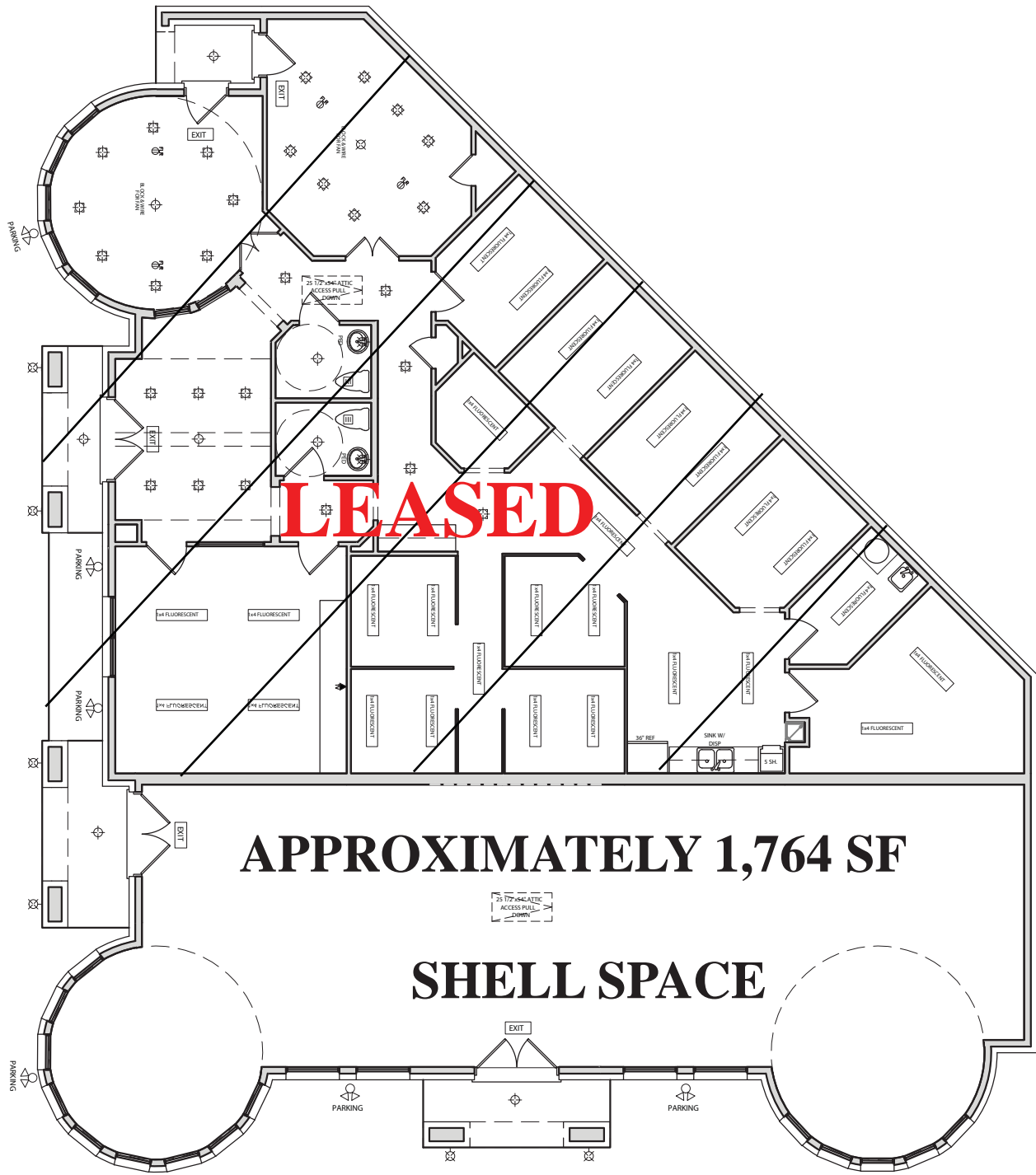


THE INFORMATION CONTAINED HEREIN WAS OBTAINED FROM SOURCES BELIEVED RELIABLE; HOWEVER, MAVERICK COMMERCIAL MAKES NO GUARANTEES, WARRANTIES OR REPRESENTATION AS TO THE COMPLETENESS OR ACCURACY THEREOF. THE PRESENTATION OF THIS PROPERTY IS SUBMITTED SUBJECT TO ERRORS, OMISSIONS, CHANGE OF PRICE OR CONDITIONS PRIOR TO SALE OR LEASE OR WITHDRAW WITHOUT NOTICE.

FULL-SERVICE COMMERCIAL REAL ESTATE SERVICES INCLUDING MARKETING, MANAGEMENT, DEVELOPMENT, INVESTMENT, AND CORPORATE SERVICES
 1571 NORTH GLENVILLE DRIVE, SUITE 150, RICHARDSON, TEXAS, 75081 • 972-889-9000 • FAX 972-889-1500 • WWW.MAVERICKCOMMERCIAL.COM



FOR LEASE
1100 WEST PLANO PARKWAY
OFFICE/MEDICAL BUILDING
APPROXIMATELY 1,764 SQUARE FEET



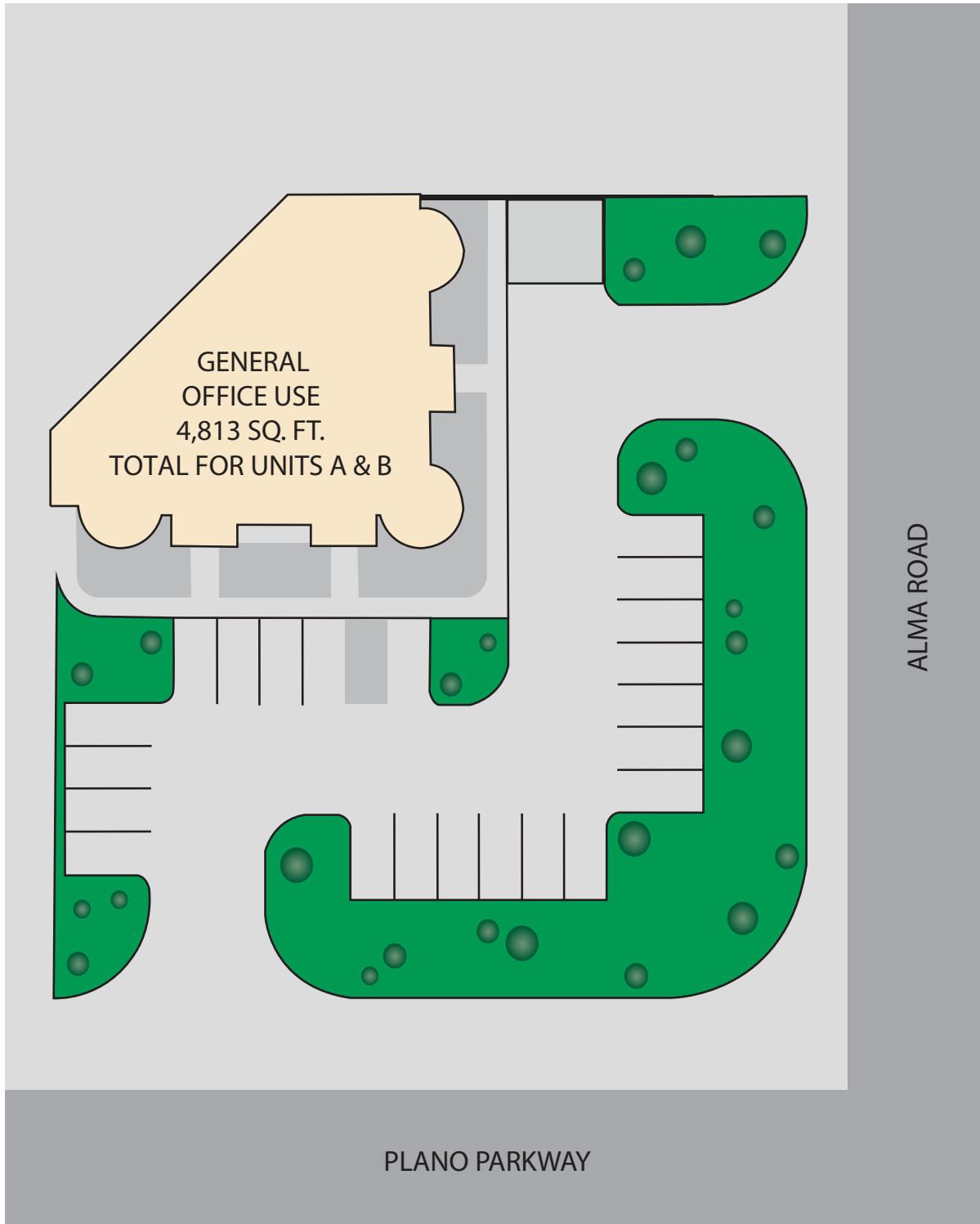
APPROXIMATELY 1,764 SF

SHELL SPACE



THE INFORMATION CONTAINED HEREIN WAS OBTAINED FROM SOURCES BELIEVED RELIABLE; HOWEVER, MAVERICK COMMERCIAL MAKES NO GUARANTEES, WARRANTIES OR REPRESENTATION AS TO THE COMPLETENESS OR ACCURACY THEREOF. THE PRESENTATION OF THIS PROPERTY IS SUBMITTED SUBJECT TO ERRORS, OMISSIONS, CHANGE OF PRICE OR CONDITIONS PRIOR TO SALE OR LEASE OR WITHDRAW WITHOUT NOTICE.

FOR LEASE
1100 WEST PLANO PARKWAY
OFFICE/MEDICAL BUILDING
APPROXIMATELY 1,764 SQUARE FEET



THE INFORMATION CONTAINED HEREIN WAS OBTAINED FROM SOURCES BELIEVED RELIABLE; HOWEVER, MAVERICK COMMERCIAL MAKES NO GUARANTEES, WARRANTIES OR REPRESENTATION AS TO THE COMPLETENESS OR ACCURACY THEREOF. THE PRESENTATION OF THIS PROPERTY IS SUBMITTED SUBJECT TO ERRORS, OMISSIONS, CHANGE OF PRICE OR CONDITIONS PRIOR TO SALE OR LEASE OR WITHDRAW WITHOUT NOTICE.