

FOR LEASE

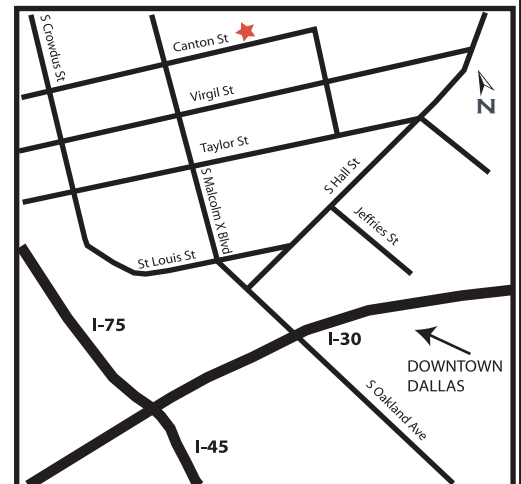
— 2717-2825 CANTON STREET —

16,050 SF AVAILABLE



2717-2825 CANTON STREET, DALLAS, TEXAS 75226

- LOCATED IN THE DEEP ELLUM
- CORNER OF CANTON AND MALCOM X
- 16,050 SQUARE FEET FOR LEASE
- APPROXIMATELY 16' CLEAR HEIGHT
- APPROXIMATELY 1,500 SQUARE FEET OF OFFICE
- FORMER LIQUOR STORE WITH EQUIPMENT AND FIXTURES IN PLACE
- DOCK HIGH LOADING FACILITIES
- PROMINENT TENANT IDENTIFICATION
- MINUTES FROM DOWNTOWN AND I-75, I-35, 30 AND HIGHWAY 45
- PROFESSIONAL PROPERTY MANAGEMENT



FOR INFORMATION CONTACT:

MARK ASTON
(972) 889-4400

MIKE FAY
(972) 889-4410

BRAD LIPTON
(972) 889-4404



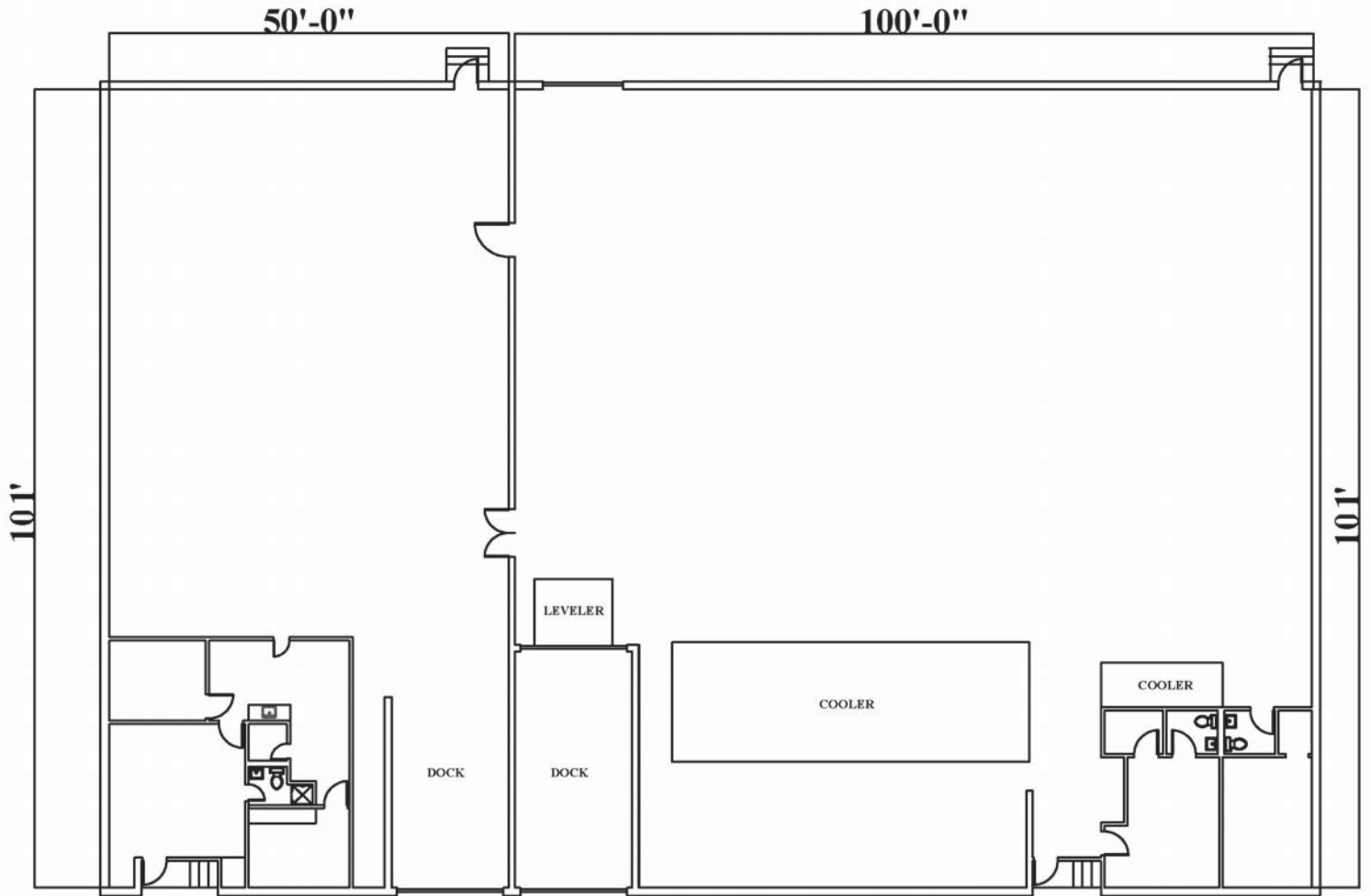
THE INFORMATION CONTAINED HEREIN WAS OBTAINED FROM SOURCES BELIEVED RELIABLE; HOWEVER, MAVERICK COMMERCIAL MAKES NO GUARANTEES, WARRANTIES OR REPRESENTATION AS TO THE COMPLETENESS OR ACCURACY THEREOF. THE PRESENTATION OF THIS PROPERTY IS SUBMITTED SUBJECT TO ERRORS, OMISSIONS, CHANGE OF PRICE OR CONDITIONS PRIOR TO SALE OR LEASE OR WITHDRAW WITHOUT NOTICE.

FULL-SERVICE COMMERCIAL REAL ESTATE SERVICES INCLUDING MARKETING, MANAGEMENT, DEVELOPMENT, INVESTMENT, AND CORPORATE SERVICES
1571 NORTH GLENVILLE DRIVE, SUITE 150, RICHARDSON, TEXAS, 75081 • 972-889-9000 • FAX 972-889-1500 • WWW.MAVERICKCOMMERCIAL.COM

FOR LEASE

— 2717-2825 CANTON STREET —

16,050 SF AVAILABLE



THE INFORMATION CONTAINED HEREIN WAS OBTAINED FROM SOURCES BELIEVED RELIABLE; HOWEVER, MAVERICK COMMERCIAL MAKES NO GUARANTEES, WARRANTIES OR REPRESENTATION AS TO THE COMPLETENESS OR ACCURACY THEREOF. THE PRESENTATION OF THIS PROPERTY IS SUBMITTED SUBJECT TO ERRORS, OMISSIONS, CHANGE OF PRICE OR CONDITIONS PRIOR TO SALE OR LEASE OR WITHDRAW WITHOUT NOTICE.